

**s|tower**<sup>®</sup>  
*Safe and smart storage solutions*

**Tower**  
**Factory**



**s|tower**<sup>®</sup>  
*Various 930*

# Specification s|tower® Various 930

Storing system for electronic components	
SMD reels	Diameter 7" – 15" / belt width 8 mm – 72 mm
SmartCarrier boxes	180 mm – 390 mm square / high 30 mm – 78 mm
Maximum reel capacity	930 reels 7" / 8 mm – 15" / 32 mm belt width
Cycle time	4 reels/min
Controlled environment	≤ 5% rF
Automated barcode processing	1D and 2D (FoV 230 x 270 mm)
Automated package registration	7" – 15" / 8 – 56 mm
Individuel configurable and expandable	belt width, diameter and number units

Hardware	MASES Software
<b>S-Tower 7" – 15" / 8 mm – 72 mm</b>	<b>Material and Storing Enterprise System</b>
SPS with interchangeable memory	Component management
PC with touch panel	SQL Database
CAN-Bus technologie	Programming in .Net / C#
Automated barcode and package registration (Option)	User management
Status light (option)	Traceability management
Short way random storage	Backup management
Datalogger rH / °C (option)	Inventory monitoring
MSD-storage humidity controlled	Production scheduling
ESD conform powder coating	Inventory function (option)
LED display for external storing (option)	File Transfer Interface (ASCII data)
Terminal with safety lock (automated as option)	WeService Interface (option)
Working load 5 kg	SAP Interface (option)

Technical data and system requirement Various 930	
Dimension (W x D x H)	1467 mm x 1584 mm x 2970 mm
Weight (without cassettes)	490 kg
Power supply	200 – 230 V / 50 – 60 Hz / 250 W
Network	Ethernet / LAN
DryFlow-Unit sensor controlled	≤ 5% rF / 250 W
Basic PC for MASES Master Software	Win 7 / USB / Ethernet / LAN

## Technical data s|tower® basic configuration

Configuration 7" – 15" / 8 mm – 56 mm reels					
reel type	cassettes/ tower	slots/ cassette	SmartCarrier*/ cassette	slots/ tower	reels capacity
8 mm / 7"	8	15	-	120	502
12 mm / 7"	2	13	-	26	
16 mm / 7"	1	10	-	10	
24 mm / 7"	1	8	8	8	
8 mm / 13"	13	15	-	195	
12 mm / 13"	4	13	-	52	
16 mm / 13"	4	10	-	40	
24 mm / 13"	3	8	8	24	
32 mm / 13"	0	6	6	0	
44 mm / 13"	0	5	5	0	
56 mm / 13"	0	4	4	0	
32 mm / 15"	3	6	6	18	
44 mm / 15"	1	5	5	5	
56 mm / 15"	1	4	4	4	

\*SmartCarrier box (option)

## Technical data s|tower® maximum reels capacity

Configuration 7" / 8 mm and 15" / 32 mm – 56 mm reels					
reel type	cassettes/ tower	slots/ cassette	SmartCarrier*/ cassette	slots/ tower	reels capacity
8 mm / 7"	60	15	-	900	930
12 mm / 7"	0	13	-	0	
16 mm / 7"	0	10	-	0	
24 mm / 7"	0	8	8	0	
8 mm / 13"	0	15	-	-	
12 mm / 13"	0	13	-	-	
16 mm / 13"	0	10	-	-	
24 mm / 13"	0	8	8	-	
32 mm / 13"	0	6	6	-	
44 mm / 13"	0	5	5	-	
56 mm / 13"	0	4	4	-	
32 mm / 15"	5	6	6	30	
44 mm / 15"	0	5	5	0	
56 mm / 15"	0	4	4	0	

\*SmartCarrier box (option)

# Technical data s|tower® SmartCarrier (optional accessory)

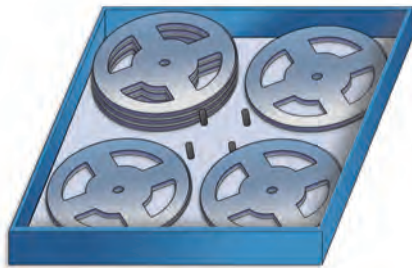
## Configuration 7"/ 8 mm reels in SmartCarrier box 15"

Maximum reel capacity 8 mm reels with 7" cassettes and SmartCarrier box 15"

reel type	cassettes/ tower	slots/ cassette	reels/ SmartCarrier box	slots/ tower	reels capacity SmartCarrier box	reels capacity
8 mm / 7"	60	15	-	900	400*	1300
56 mm / 13"	-	4	-	-		
56 mm / 15"	5	4	20	20		

\*Application for SmartCarrier box

e.g. cassette 56 mm/15" with 20 x 7"/8 mm reels per SmartCarrier box = 80 reels/cassette



4 x 7" reels  
in 15" SmartCarrier box

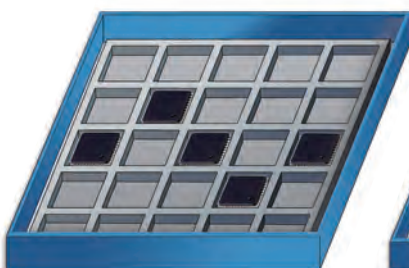


2 x 7" reels  
in 13" SmartCarrier box

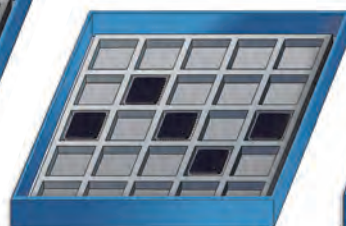
## SmartCarrier boxes

reel type	effective depth of box/mm	8 mm/ 7" reels*	8 mm/ 13" reels*	15" reels	JEDEC-Trays (Thin)
24 mm / 7"	33	3	-	-	-
24 mm / 13"	33	4	2	-	6
24 mm / 15"	33	8	2	yes	6*
32 mm / 13"	46	6	3	-	8
32 mm / 15"	46	12	3	yes	8*
44 mm / 13"	59	8	4	-	10
44 mm / 15"	59	16	4	yes	10*
56 mm / 13"	78	10	5	-	12
56 mm / 15"	78	20	5	yes	12*

\*Application for SmartCarrier box



JEDEC trays  
in 15" SmartCarrier box



JEDEC trays  
in 13" SmartCarrier box



15" reel  
in 15" SmartCarrier box



13" reel  
in 13" SmartCarrier box